

NOTES:

- ↑) MAT'L: AISI 1045 STEEL (REF)

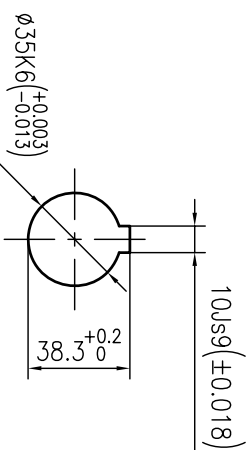
2) COUPLING CAPACITY:

NOMINAL Torque: [983Nm]

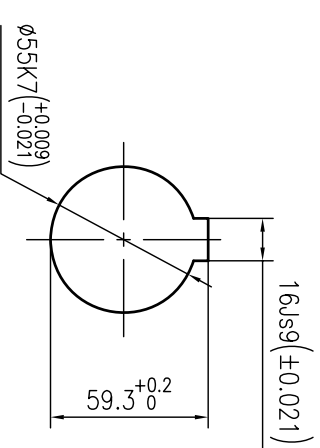
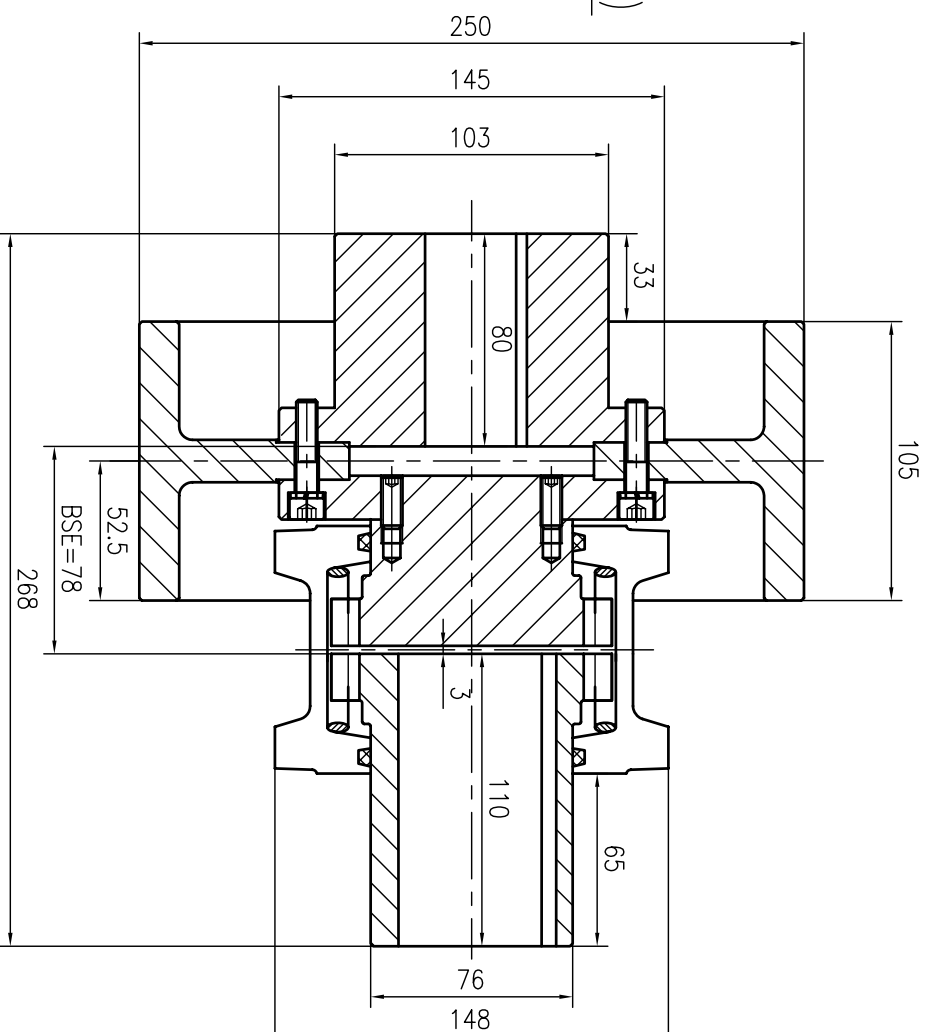
MAX SPEED:[4350RPM]

3)) GREASE CAPACITY:

NLGL Grade 1#/2#.



減算機側 (REDUCER SIDE)



电机端(MOTOR SIDE)

[illegible]

THIS DOCUMENT CONTAINS INFORMATION WHICH IS THE PROPERTY OF LOVEJOY INC. AND IS PROVIDED ON A RESTRICTED BASIS. IT IS NOT TO BE USED IN ANY WAY DETRIMENTAL TO THE INTERESTS OF LOVEJOY INC. AND MAY NOT BE COPIED, TRANSMITTED TO OTHERS, OR USED FOR MANUFACTURING PURPOSES WITHOUT THE WRITTEN PERMISSION OF LOVEJOY, INC.

1060 BW-250X105
QTY. 6



LOVEJOY CHINA

美国洛夫乔伊公司中国代表处

LOVEJOY CHINA
SHEET

IPC NUMBER/DRAWING NO. SHEET

1 OF 1