

NOTES:

- 1) MAT'L: AISI 1045 STEEL (REF)

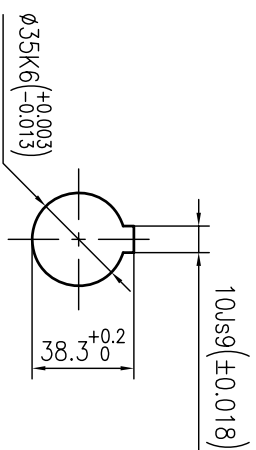
2) COUPLING CAPACITY:

NOMINAL Torque: [983Nm]

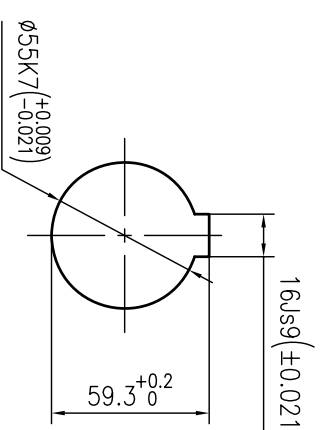
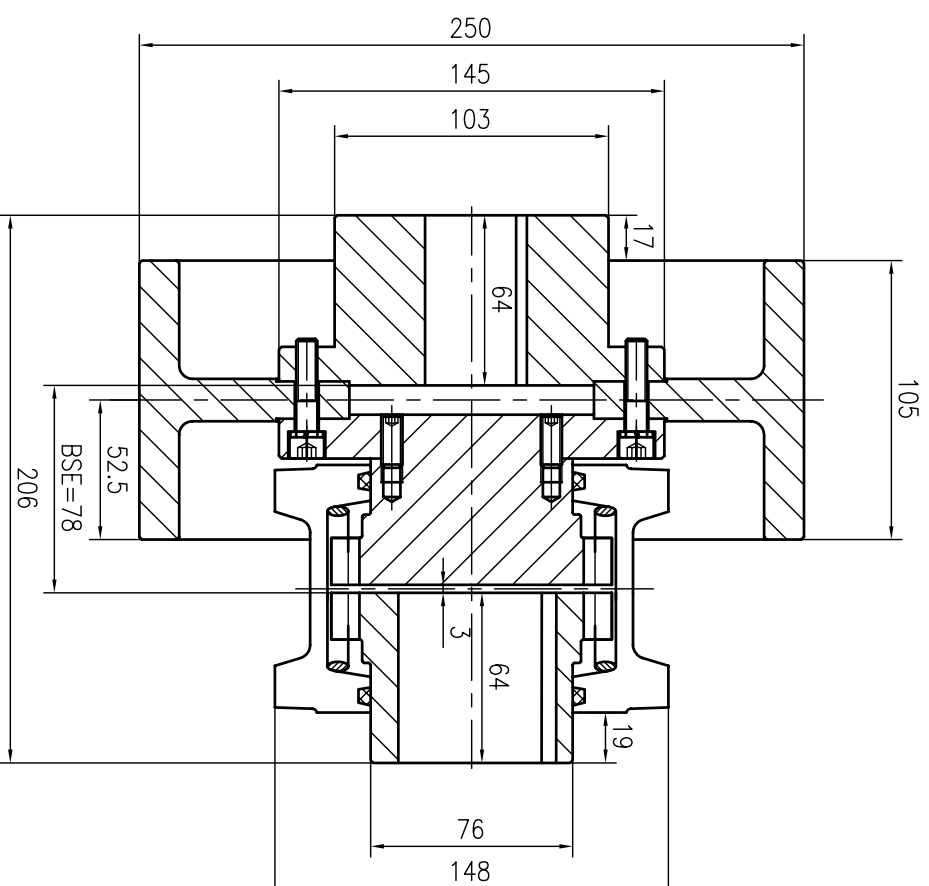
MAX SPEED:[4350RPM]

3)) GREASE CAPACITY:

NLGL Grade 1#/2#.



新加坡 (REDUCER SIDE)



电机端(MOTOR SIDE)

| UNLESS OTHERWISE SPECIFIED | | ROUND | DATE |
|--|------------|-----------------------------|------|
| FORMS XX : | XXX : XXXX | JASON | |
| CONCRETE MS T/B | | DRAWN | DATE |
| ANGLES 1° | | KURT | DATE |
| WALL SYMBOLS | 5° | SCALE | DATE |
| INCREASING 1/4" LONG REFERENCE DIMS. IN TECHNICAL AND FIELD | | 1:4 | |
| | | W: | |
| | | AND TYPED STANDARD PRACT | |
| DESCRIPTION | DATE | CO | |
| REV | | | |

THIS DOCUMENT CONTAINS INFORMATION WHICH IS THE PROPERTY OF LOVEJOY INC. AND IS PROVIDED ON A RESTRICTED BASIS. IT IS NOT TO BE USED IN ANY WAY DETRIMENTAL TO THE INTERESTS OF LOVEJOY INC. AND MAY NOT BE COPIED, TRANSMITTED TO OTHERS, OR USED FOR MANUFACTURING PURPOSES WITHOUT THE WRITTEN PERMISSION OF LOVEJOY, INC.

1060 BW-250X105
QTY. 6



LOVEJOY CHINA

美国洛夫乔伊公司中国代表处

| | |
|------------------------|-------|
| LOVEJOY CHINA | |
| IPC NUMBER/DRAWING NO. | SHEET |

1060BW-250X105

1 OF 1